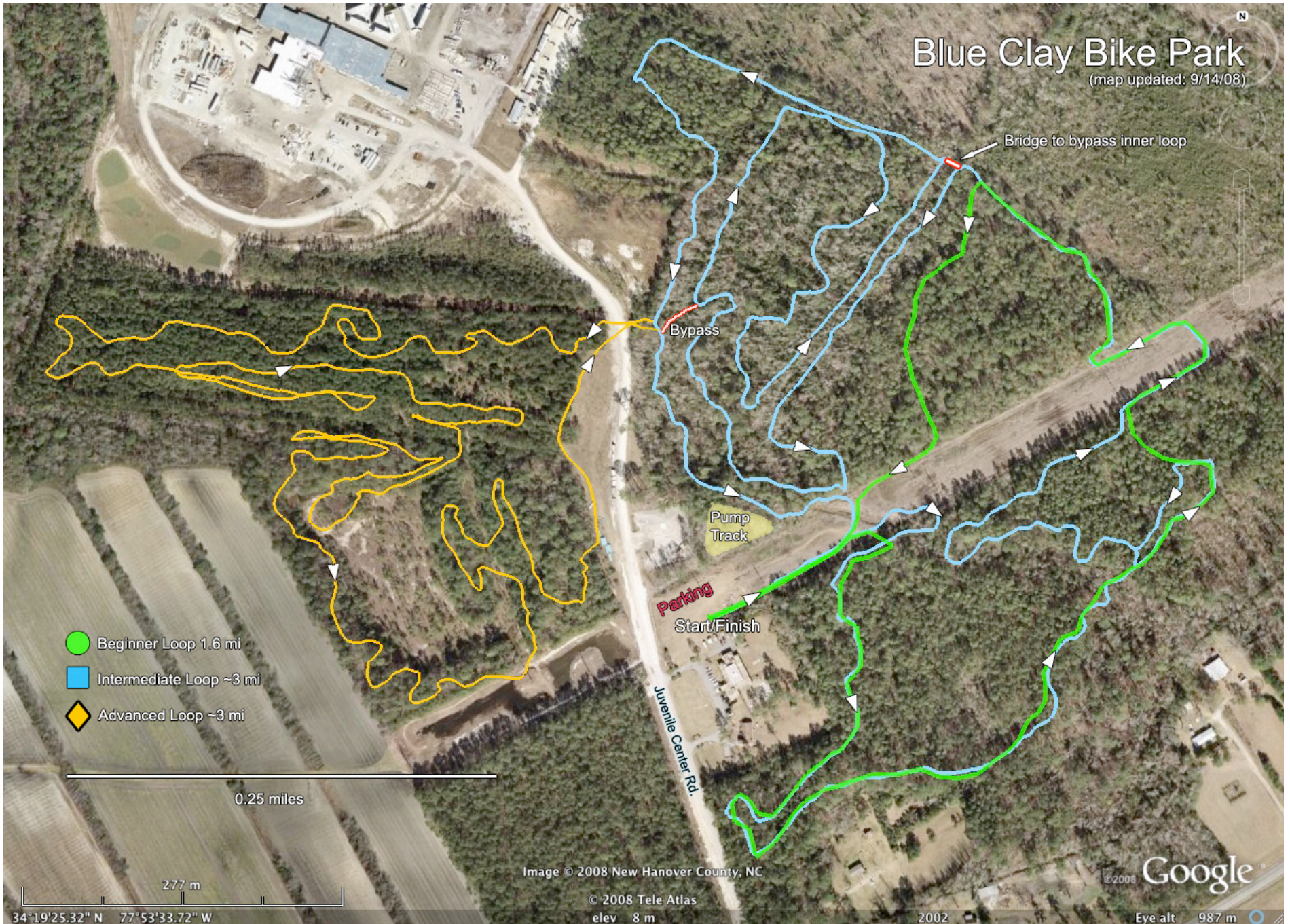


BLUE CLAY BIKE PARK TRAIL MAP



RULES OF THE TRAIL:

1. Wear A Helmet

Ride with a partner.
Bring a cell phone.
Check all equipment.

2. Don't Ride Wet Trails

Wait 24–48 hours after rain.
Check trail status at
www.sirbikesalot.com.

3. Share The Trail

Travel safely on trail.
Be courteous.
Pass with care.
Pack it in? Pack it out.

4. Be Prepared

Helmets required.
Know your ability.
Look for hazards.
Observe trail signs.

5. Emergency Info

Dial 911 in case of emergency.
Note EMS station next to park.
Carry ID on you with emergency contact info.

6. Trail Damage

Area considered CLOSED when conditions are wet. DO NOT RIDE DURING THESE TIMES.
Trail construction or maintenance requires approved park authorization.

Riders under age 13 must have adult supervision present at all times. Riders 13 to 17 years of age MUST carry emergency contact information at all times.

Rider assumes all risk & responsibility for injury.

Featuring:

Six miles of challenging mountain bike singletrack

Pump Track

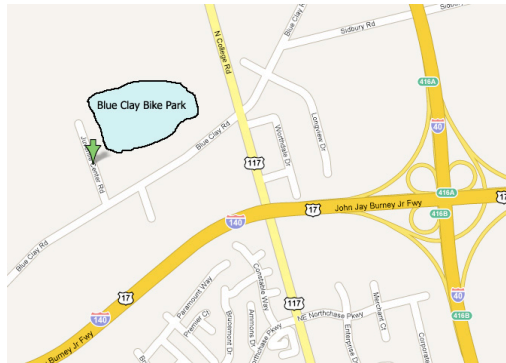
Technical Trail Features

Hills

Races and fun events

How to get there:

The park is located on Juvenile Center Rd. off of Blue Clay Rd. Take N. College to Blue Clay Rd. Left on Blue Clay Rd. Right on Juvenile Center Rd. Parking on right under powerlines.



For more detailed directions and maps, including the latest news and info about the park, go to www.sirbikesalot.com.

Sponsored By:

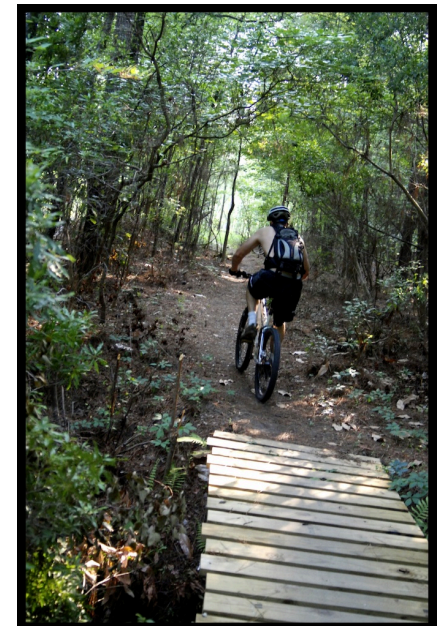


www.capefearcyclists.com

New Hanover County Parks
(910) 798-PARK

BLUE CLAY BIKE PARK

since 2007



NEW HANOVER
COUNTY PARKS